



£325,000

At a glance...



3



2



1

EPC

E

COUNCIL
TAX

B

**holland
& odam**

20 The Archers Way
Glastonbury
Somerset
BA6 9JB

TO VIEW

30 High Street, Glastonbury,
Somerset BA6 9DX

01458 833123

glastonbury@hollandandodam.co.uk



Directions

From the town centre proceed up the High Street and shortly after passing St John's Church on the left, turn left into The Archers Way where the property will be found just before the junction with St Edmunds Road, on the right hand side.

Services

Mains electricity, gas, water and drainage are connected. Gas central heating system.

Local Authority

Mendip District Council
0300 3038588
mendip.gov.uk

Tenure

Freehold



Location

Glastonbury is an historic centre famous for its Tor, picturesque Abbey ruins and many legends. The town provides an eclectic mix of shops along with restaurants and pubs, mainstream supermarkets, health centres, modern library, primary schooling and St Dunstons secondary school. The neighbouring town of Street offers a further choice of shopping with Clarks Village, Strode Sixth Form College and Strode Theatre. Millfield Junior School is on the edge of Glastonbury at Edgarley and St Edmunds Road is equally convenient for Millfield Senior School in Street.

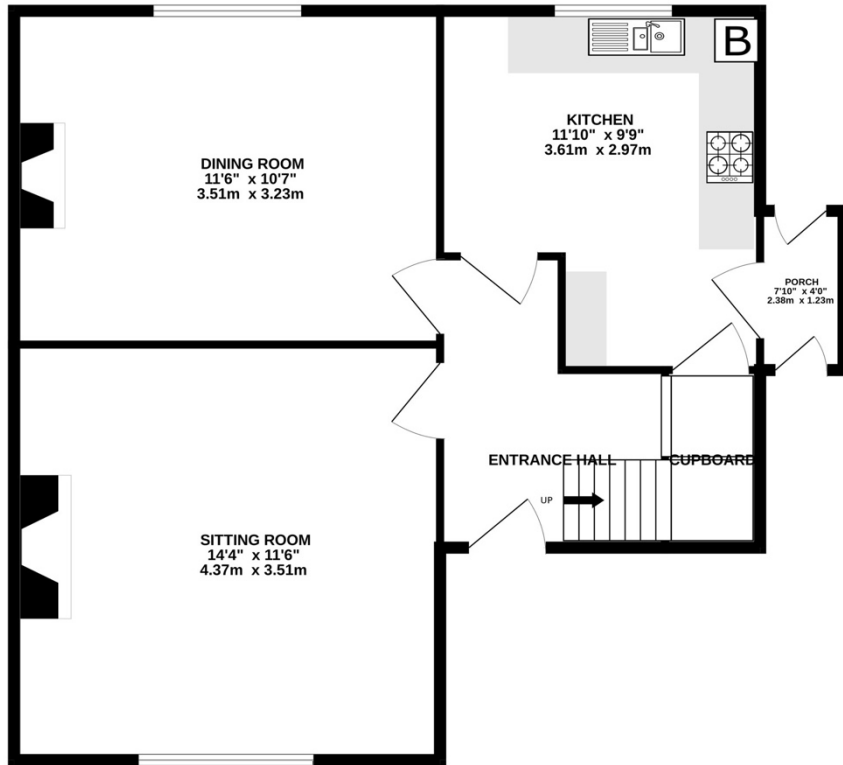
Insight

Situated less than a five-minute walk of the High Street, is this three bedroom red brick, semi-detached home, available with NO ONWARD CHAIN. The property benefits from a large rear garden that in turn leads to gravelled off road parking for several vehicles. Furthermore the property is double glazed throughout with gas central heating.

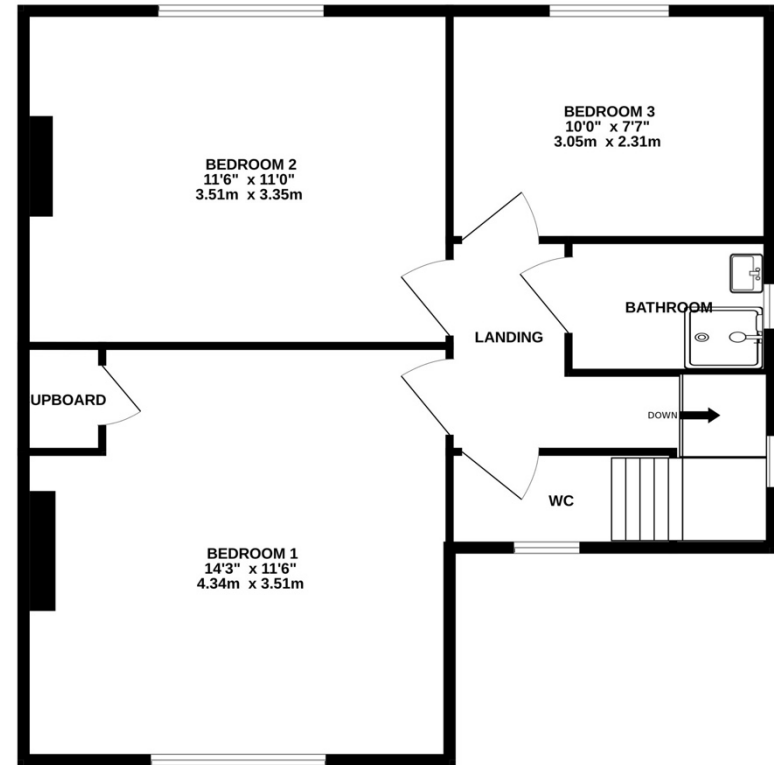
- ☞ NO ONWARD CHAIN
- ☞ Situated less than 5 minutes walk from the High Street and all it's amenities
- ☞ Sitting room with a fireplace and gas coal effect inset fire. Also a dining room with an original tiled fireplace
- ☞ L-Shaped kitchen with a range of units, having work top surfaces over and incorporating space & plumbing for a washing machine, space for a cooker and fridge
- ☞ Utility/porch off the kitchen with access to the front and rear garden through double glazed doors at either end
- ☞ On the first floor there are three bedrooms, bedroom one has an airing cupboard housing a hot water tank, bedrooms two & three having a rear aspect
- ☞ Shower room with a shower enclosure including a Triton electric shower and wash hand basin
- ☞ Separate WC with wash hand basin
- ☞ Gardens to the front & rear, the rear garden in particular is a good size with a greenhouse, shed/workshop with power and light and raised beds
- ☞ Off road parking at the rear for several vehicles



GROUND FLOOR



1ST FLOOR



20 THE ARCHERS WAY, GLASTONBURY, BA6 9JB

Whilst every attempt has been made to ensure the accuracy of the floorplan contained here, measurements of doors, windows, rooms and any other items are approximate and no responsibility is taken for any error, omission or mis-statement. This plan is for illustrative purposes only and should be used as such by any prospective purchaser. The services, systems and appliances shown have not been tested and no guarantee as to their operability or efficiency can be given.
Made with Metropix ©2022

DISCLAIMER

CONSUMER PROTECTION FROM UNFAIR TRADING REGULATIONS 2008. The Agent has not tested any apparatus, equipment, fixtures and fittings or services and so cannot verify that they are in working order or fit for the purpose. A Buyer is advised to obtain verification from their Solicitor or Surveyor. References to the Tenure of a Property are based on information supplied by the Seller. The Agent has not had sight of the

title documents. A Buyer is advised to obtain verification from their Solicitor. Items shown in photographs are not included unless specifically mentioned within the sales particulars. They may however be available by separate negotiation. Buyers must check the availability of any property and make an appointment to view before embarking on any journey to see a property.

DATA PROTECTION. Personal information provided by customers wishing to receive information and/or services from the estate agent and the Property Sharing Experts (of which it is a member) for the purpose of providing services associated with the business of an estate agent but specifically excluding mailing or promotions by a third party. If you do not wish your personal information to be used for any of these purposes, please notify us.