

Woodgate Road
Liskeard PL14 6DY



BELVOIR!
Property is personal

Guide Price £290,000



***** LOOKING FOR THE WOW FACTOR?! *****

An absolutely stunning semi-detached bungalow that has been stylishly redesigned and refurbished by the current owners!

The property enjoys a modern open plan layout with contemporary flair throughout including a beautiful kitchen, bathroom & en-suite shower room! There is an abundance of light pouring into the property via the patio doors and windows at the rear, and the most wonderful South facing rear garden with Koi pond, wooden bridge, summerhouse, storage and full width raised decked terrace offering wonderful far reaching views! Other features include; driveway, two double bedrooms, utility room, GCH, DG & more. This home offers something truly unique in the current marketplace and needs to be viewed to be fully appreciated!

Call today to book your viewing!!



Score	Energy rating	Current	Potential
92+	A		
81-91	B		
69-80	C		
55-68	D		68 D
39-54	E		
21-38	F	23 F	
1-20	G		

BELVOIR!

136C Fore street Saltash PL12 6JR

Tel: 01752 850440

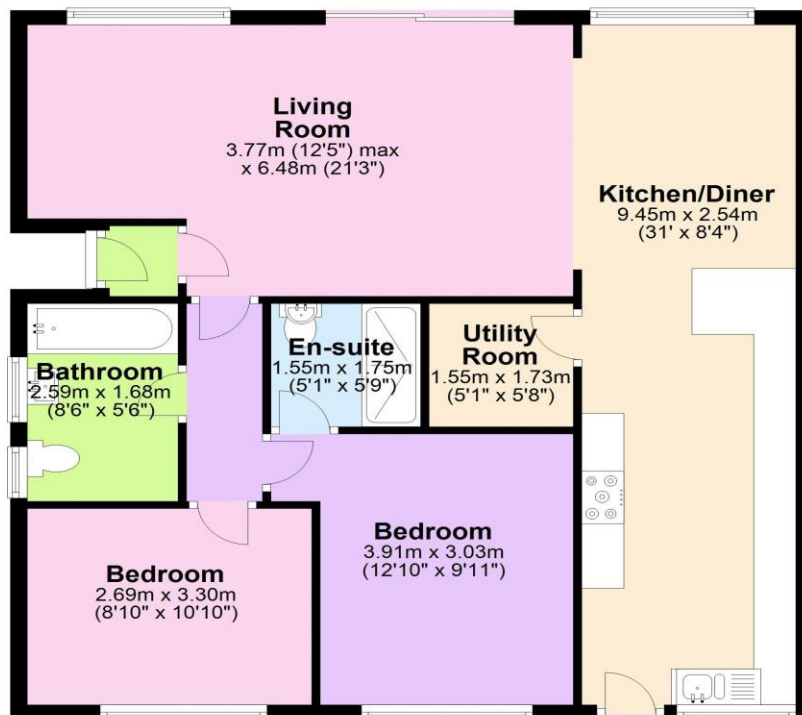
Email: saltashsales@belvoir.co.uk

<https://www.belvoir.co.uk/offices/plymouth>

DIRECTIONS:

Ground Floor

Approx. 83.5 sq. metres (898.9 sq. feet)



Total area: approx. 83.5 sq. metres (898.9 sq. feet)